

R W Building Consultants, Inc.

Consulting and Engineering Services for the Building Industry

P.O. Box 230 Valrico, FL 33594 Phone 813.684.3831

Facsimile 813.684.3954

ENGINEER'S NOTICE OF EVALUATION # PSI-202F

Therma-Tru Corp.
108 Mutzfeld Road
Butler, IN 46721
Phone 219.868.5811 Facsimile 219.868.5190

DESCRIPTION OF UNIT

Model Designation: Premium Series Wood Edge Steel Door (Opaque) with or without Side-lites

Maximum Overall Nominal Size: up to 8'4 x 6'8 **Usable In-swing Configurations:** X, OXO, XO, OX, XX & OXXO

General Description: The head and jambs are wood measuring 4.5" x 1.25" with an extruded aluminum saddle threshold. The door panels and sidelite panels are 1.68" thick and consist of two 24 gauge (min 0.022") steel skins glued to wood stiles and rails with a urethane core. The glazed sidelites are routed to receive 1/2" insulated tempered lip lite inserts manufactured by Therma-Tru.

FBC Section 1707 Materials and Assembly Tests:

(1707.4.3 Exterior Door Assemblies; 1707.4.5 Mullions Door Assemblies)

Test	Description	Test Location	Date	Report No.	Certifying Engineer
ASTM E330	Uniform Static Air Pressure	ETC- Rochester, NY	July 6, 2001	01-741-11006.0	Joseph L. Dolden, P.E. # 42929
			May 15, 2001	01-741-10639.0	Wendell Haney, P.E. #54158
TAS 202	Forced Entry	ETC- Rochester, NY	July 6, 2001	01-741-11006.0	Joseph L. Dolden, P.E. # 42929
			May 15, 2001	01-741-10639.0	Wendell Haney, P.E. #54158
ASTM E331	* Water Penetration	ETC- Rochester, NY	July 6, 2001	01-741-11006.0	Joseph L. Dolden, P.E. # 42929
			May 15, 2001	01-741-10639.0	Wendell Haney, P.E. #54158
ASTM E283	Air Infiltration	ETC- Rochester, NY	July 6, 2001	01-741-11006.0	Joseph L. Dolden, P.E. # 42929
			May 15, 2001	01-741-10639.0	Wendell Haney, P.E. #54158
TAS 201/203	**Large Missile Impact/Cycling	ETC- Rochester, NY	July 6, 2001	01-741-11006.0	Joseph L. Dolden, P.E. # 42929
			May 15, 2001	01-741-10639.0	Wendell Haney, P.E. #54158

* Sidelites are considered a window and meet 15% of Positive Design Pressure water infiltration criteria.

** Opaque products meet large missile impact. All glazed products must be shuttered to meet windborne debris criteria.

Design Pressure Ratings:

Configuration	Maximum Size	Design Pressure Ratings	
Opaque Single X	Up To 3'0 x 6'8	+75.00 -75.00	
Opaque Single with Sidelites XO, OX, OXO	Up To 5'4 x 6'8	+65.00 -65.00	
		Std Alum Astragal	Coastal Alum Astragal
Opaque Double XX	Up To 6'0 x 6'8	+ 40.00 - 40.00	+ 65.00 - 65.00
Opaque Double with Sidelites OXXO	Up To 8'4 x 6'8	+ 40.00 - 40.00	+ 65.00 - 65.00

Installation and Anchoring: See reverse side this page

Use

1. Evaluated for use in locations adhering to the Florida Building Code and where pressure requirements as determined by ASCE 7 Minimum Design Loads for Buildings and Other Structures do not exceed the design pressure ratings listed above.

2. For Masonry installations where the sub-buck is less than 1-1/2 inches (FBC section 1707.4.4 Anchorage Methods and sub-sections 1707.4.4.1 and 1707.4.4.2) same diameter Tapcon type concrete anchors must be substituted and the length must be such that a minimum 1-1/4" engagement of the Tapcon into the masonry wall is obtained.

Certification: Florida Professional Engineer - Seal No. 43409

April 22, 2002

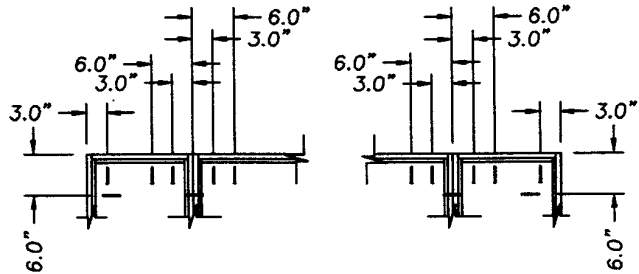
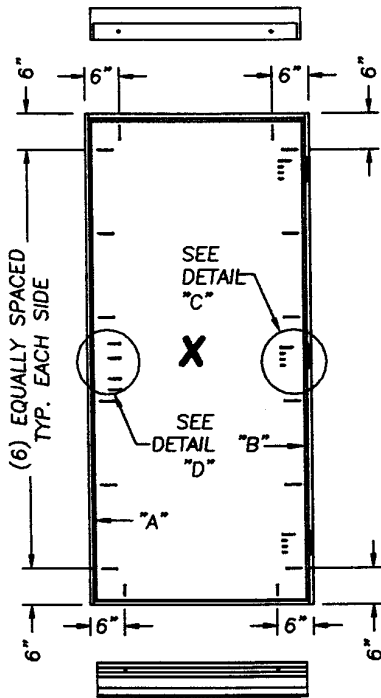
Lyndon F. Schmidt

19506 French Lace Drive

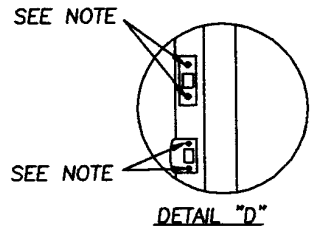
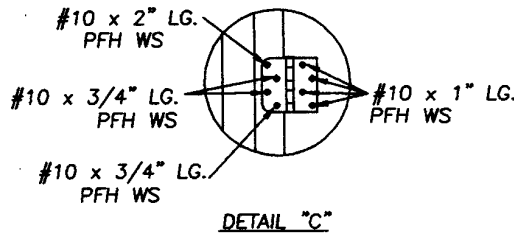
Lutz, FL 33558

Therma-Tru® Premium Series Wood Edge In-swing Steel Door

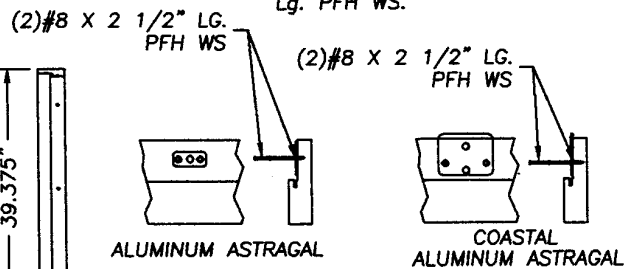
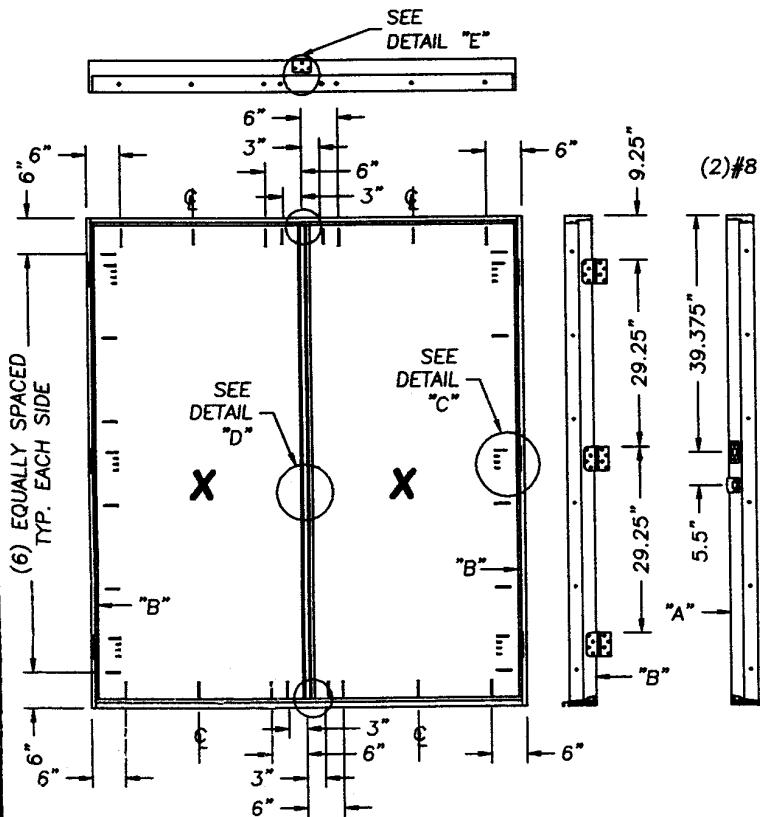
Maximum Size Up To 8'4" x 6'8"



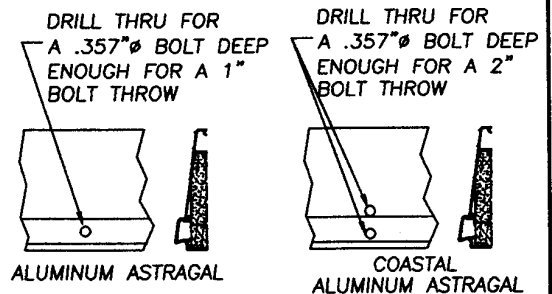
When attaching Sidelite the above anchoring applies.



Note:
When attaching the strike & deadbolt plates to the strike & buck use #10 x 2" Lg. PFH WS. When attaching the strike & deadbolt plates to the astragal use #8 x 2 1/2" Lg. PFH WS. When attaching the strike jamb & sidelite jamb use #10 x 1 3/4" Lg. PFH WS.



DETAIL "E"
ATTACH ASTRAGAL THROW BOLT STRIKE PLATE TO FRAME AS SHOWN.



DETAIL "F"
ASTRAGAL THROW BOLTS AT THE THRESHOLD