

ENGINEER'S NOTICE OF EVALUATION # PSO-8205F

Therma-Tru Corp.
 108 Mutzfeld Road
 Butler, IN 46721
 Phone 219.868.5811 Facsimile 219.868.5190

DESCRIPTION OF UNIT

Model Designation: Premium Series Wood Edge Steel Door (Opaque) with or without Side-lites

Maximum Overall Nominal Size: up to 8'4 x 8'0 **Usable Out-swing Configurations:** X, OXO, XO, OX, XX & OXXO

General Description: The head and jambs are wood measuring 4.5" x 1.25" with an extruded aluminum threshold. The door panels and sidelite panels are 1.68" thick and consist of two 24 gauge (min 0.022") steel skins for the Premium Series glued to wood stiles and rails with a urethane core. The glazed sidelites are routed to receive 1/8" tempered or 1/2" insulated tempered lip lite inserts manufactured by Therma-Tru.

FBC Section 1707 Materials and Assembly Tests:
 (1707.4.3 Exterior Door Assemblies; 1707.4.5 Mullions Door Assemblies)

Test	Description	Test Location	Date	Report No.	Certifying Engineer
ASTM E330	Uniform Static Air Pressure	NCTL - Orlando, FL	May 1, 1997	210-1917-1	Barry D. Portnoy, P.E. # 16258
		NCTL - Orlando, FL	May 25, 1998	210-2030-1	
TAS 202	Forced Entry	NCTL - Orlando, FL	May 1, 1997	210-1917-1	Barry D. Portnoy, P.E. # 16258
		NCTL - Orlando, FL	May 25, 1998	210-2030-1	
ASTM E331	* Water Penetration	NCTL - Orlando, FL	May 1, 1997	210-1917-1	Barry D. Portnoy, P.E. # 16258
		NCTL - Orlando, FL	May 25, 1998	210-2030-1	
ASTM E283	Air Infiltration	NCTL - Orlando, FL	May 1, 1997	210-1917-1	Barry D. Portnoy, P.E. # 16258
		NCTL - Orlando, FL	May 25, 1998	210-2030-1	
TAS 201/203	**Large Missile Impact/Cycling	NCTL - Orlando, FL	May 1, 1997	210-1917-1	Barry D. Portnoy, P.E. # 16258

* Sidelites are considered a window and meet 15% of Positive Design Pressure water infiltration criteria.
 **Sidelites must be shuttered to meet windborne debris criteria.

Design Pressure Ratings:

Configuration		Maximum Size	Design Pressure Ratings	
Single	X	Up To 3'0 x 8'0	+ 45.00 - 45.00	
Single with Sidelites	XO, OX, OXO	Up To 5'4 x 8'0	+ 45.00 - 45.00	
			Std Alum Astragal	Coastal Alum Astragal
Double	XX	Up To 6'0 x 8'0	+ 40.00 - 40.00	+ 45.00 - 45.00
Double with Sidelites	OXXO	Up To 8'4 x 8'0	+ 40.00 - 40.00	+ 45.00 - 45.00

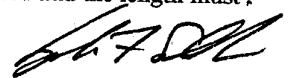
Installation and Anchoring: See reverse side this page

Use

1. Evaluated for use in locations adhering to the Florida Building Code and where pressure requirements as determined by ASCE 7 Minimum Design Loads for Buildings and Other Structures do not exceed the design pressure ratings listed above.
2. For Masonry installations where the sub-buck is less than 1-1/2 inches (FBC section 1707.4.4 Anchorage Methods and sub-sections 1707.4.4.1 and 1707.4.4.2) same diameter Tapcon type concrete anchors must be substituted and the length must be such that a minimum 1-1/4" engagement of the Tapcon into the masonry wall is obtained.

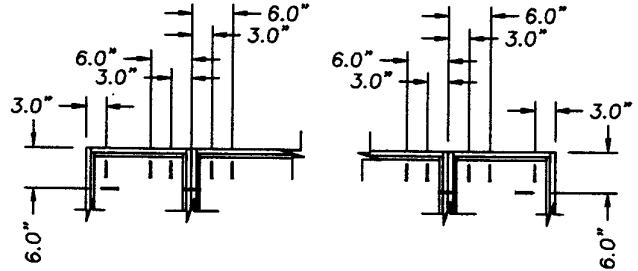
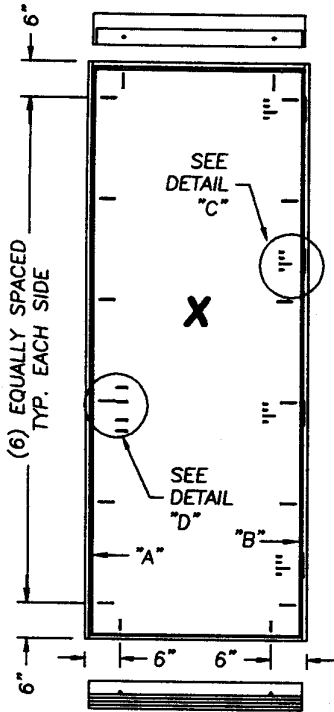
Certification: Florida Professional Engineer - Seal No. 43409

April 25, 2002

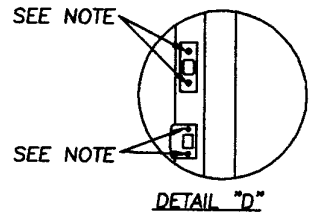
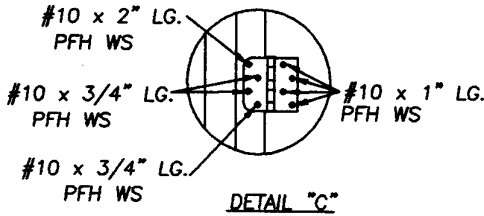

 Lyndon F. Schmidt

Therma-Tru® Premium Series Wood Edge Opaque Out-swing Steel Door

Maximum Size Up To 8'4" x 8'0"

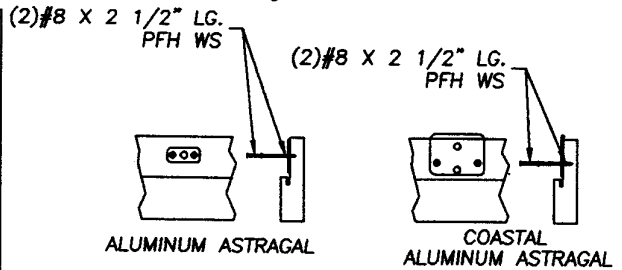
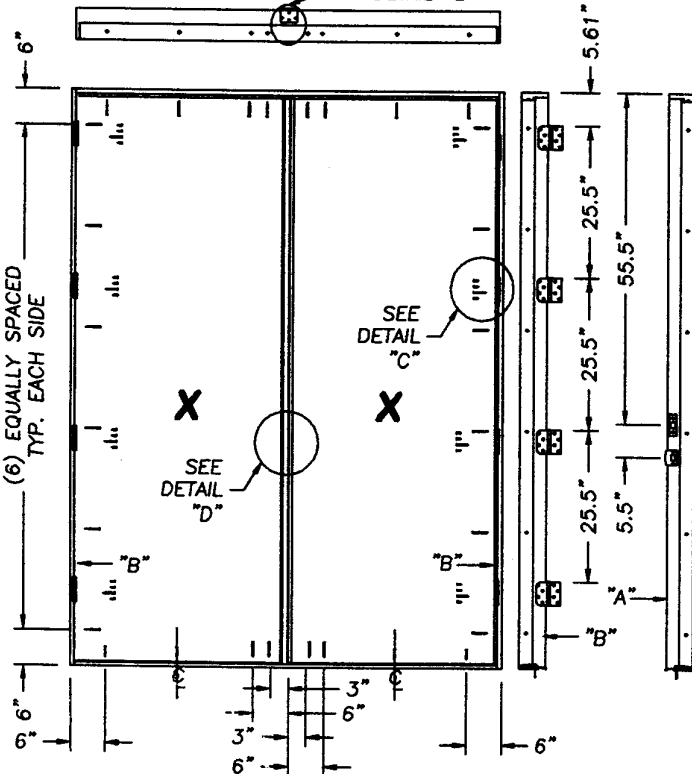


When attaching Sidelite the above anchoring applies.

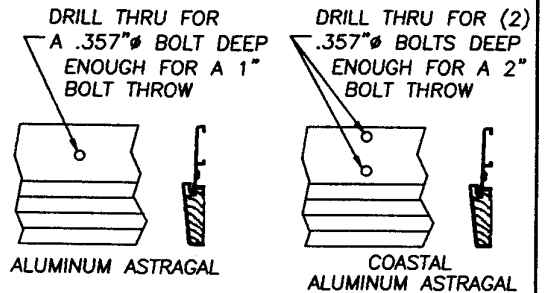


NOTE: All perimeter screws are #8 x 2-1/2" PFH WS.

Note:
When attaching the strike & deadbolt plates to the strike & buck use #10 x 2" Lg. PFH WS. When attaching the strike & deadbolt plates to the astragal use #8 x 2 1/2" Lg. PFH WS. When attaching the strike jamb & sidelite jamb use #10 x 1 3/4" Lg. PFH WS.



DETAIL "E"
ATTACH ASTRAGAL THROW BOLT STRIKE PLATE TO FRAME AS SHOWN.



DETAIL "F"
ASTRAGAL THROW BOLTS AT THE THRESHOLD