



R W Building Consultants, Inc.

Consulting and Engineering Services for the Building Industry

P.O. Box 230 Valrico, FL 33594 Phone 813.659.9197 Facsimile 813.659.4858

ENGINEER'S NOTICE OF EVALUATION # TCS-102TF

Therma-Tru Corp.
108 Mutzfeld Road
Butler, IN 46721
Phone 260.868.5811 Facsimile 260.868.5190

DESCRIPTION OF UNIT

Model Designation: "Construction / Premium" Series 6'8 Steel Door with Transom System, (Glazed or Opaque) w/w/o Sidelites

Maximum Overall Nominal Size: up to 5'4 x 7'8 Usable In-swing Configurations: $\frac{O}{X}$, $\frac{O}{OX}$, $\frac{O}{XO}$, $\frac{O}{OXO}$

General Description: The head and jambs are wood measuring 4.5" x 1.25" with an extruded aluminum threshold. The steel door panels ("Construction" Series 0.018" skin thickness and "Premium" Series 0.021" skin thickness) and sidelite panels (0.021" skin thickness) are 1.68" thick with a urethane core. The glazed door panels and sidelites are routed to receive 1/8" tempered or 1/2" insulated lip lite inserts manufactured by Therma-Tru. The Transom glazing is a 1" insulated glass unit that is directly sealed to the jambs with butyl sealant.

FBC Section 1707 Materials and Assembly Tests:
(1707.4.3 Exterior Door Assemblies; 1707.4.5 Mullions Door Assemblies)

Test	Description	Test Location	Date	Report No.	Certifying Engineer
ASTM E330	Uniform Static Air Pressure	NCTL - Orlando	May 11, 1998	NCTL-210-2030-1	Barry Portnoy, #16258
ASTM E331	*Water Penetration	NCTL - Orlando	May 11, 1998	NCTL-210-2030-1	Barry Portnoy, #16258
ASTM E283	Air Infiltration	NCTL - Orlando	May 11, 1998	NCTL-210-2030-1	Barry Portnoy, #16258
TAS 201/203	**Large Missile Impact/Cycling	N/A	N/A	N/A	N/A

* Sidelites are considered a window and meet 15% of Positive Design Pressure water infiltration criteria.
** This product must be shuttered to meet windborne debris criteria.

Design Pressure Ratings:

Configuration	Maximum Size	Design Pressure Ratings
Sgl. Opaque or Glazed Door Panel with Transom $\frac{O}{X}$	3'0 x 7'8	+ 47.00 psf - 47.00 psf
Sgl. Opaque or Glazed Door Panel with Transom and sidelite(s) $\frac{O}{OX, XO, OXO}$	5'4 x 7'8	+ 47.00 psf - 47.00 psf

Installation and Anchoring: See reverse side this page

Use

1. Evaluated for use in locations adhering to the Florida Building Code and where pressure requirements as determined by ASCE 7 Minimum Design Loads for Buildings and Other Structures do not exceed the design pressure ratings listed above.
2. For Masonry installations where the sub-buck is less than 1-1/2 inches (FBC section 1707.4.4 Anchorage Methods and sub-sections 1707.4.4.1 and 1707.4.4.2) same diameter Tapcon type concrete anchors must be substituted and the length must be such that a minimum 1-1/4" engagement of the Tapcon into the masonry wall is obtained.

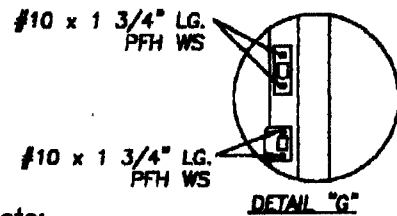
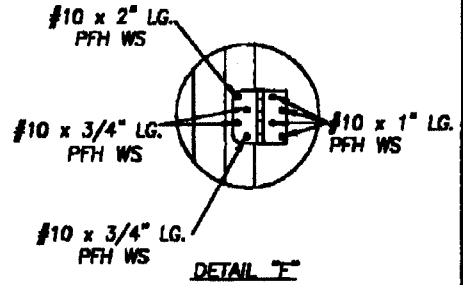
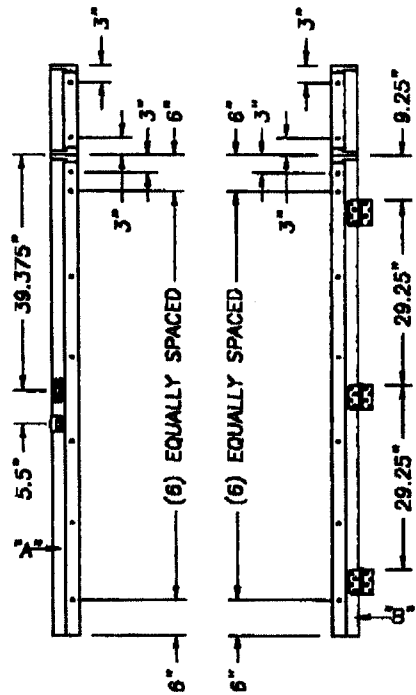
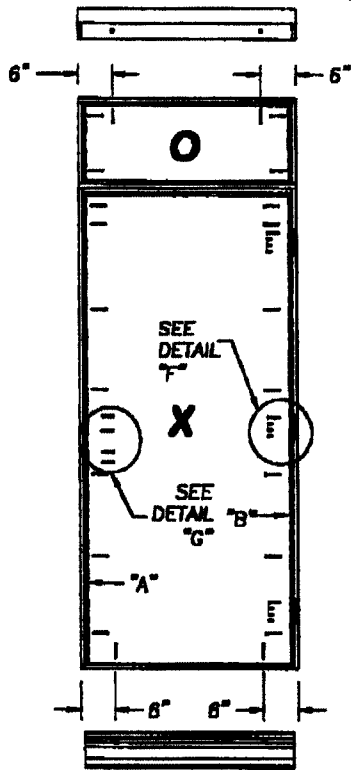
Certification: Lyndon F. Schmidt
19506 French Lace Drive
Lutz, FL 33558

Florida Professional Engineer
License No. 43409

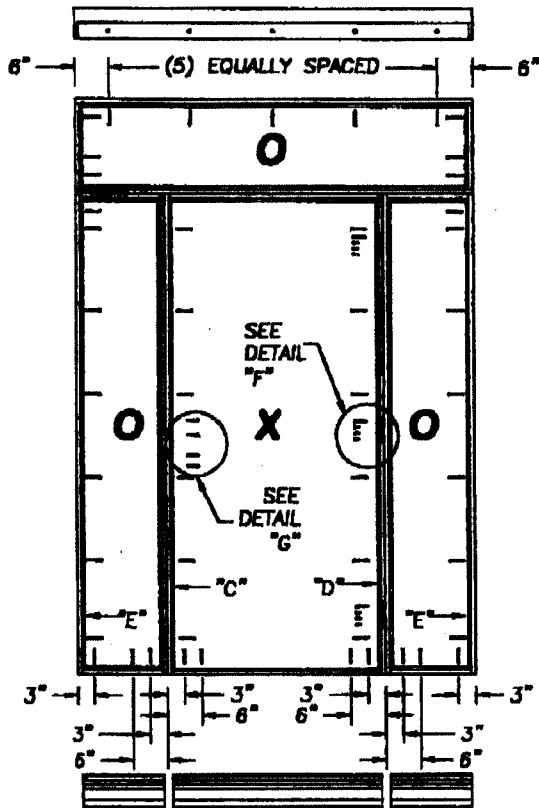
July 3, 2002

Therma-Tru® Premium Series Steel Door with Transom

Maximum Size Up To 5'4" x 7'8"



Note:
When attaching the strike & deadbolt plates without sidelites use #10 x 2" Lg. PFH WS. When attaching them with sidelites use #10 x 1 3/4" Lg. PFH WS.



Note: All Screws #10 x 2 1/2 Lg. PFH WS (unless otherwise noted)

