

R  
W  
B  
C

# R W Building Consultants, Inc.

Consulting and Engineering Services for the Building Industry

P.O. Box 230 Valrico, FL 33594 Phone 813.659.9197

Facsimile 813.659.4858

## ENGINEER'S NOTICE OF EVALUATION # TFC-102TF

Therma-Tru Corp.  
108 Mutzfeld Road  
Butler, IN 46721  
Phone 260.868.5811 Facsimile 260.868.5190

### DESCRIPTION OF UNIT

**Model Designation:** "Fiber Classic / Smooth Star" Series 6'8 Door with Transom System, (Glazed or Opaque) w/w/o Sidelites

**Maximum Overall Nominal Size:** up to 5'4 x 7'8 Usable In-swing Configurations: Q Q Q Q  
X, OX, XO, OXO

**General Description:** The head and jambs are wood measuring 4.5" x 1.25" with an extruded aluminum threshold. The door panels and sidelite panels are 1.68" thick and consist of two SMC skins with a thickness of 0.065" for the Fiber Classic Series or the Smooth Star Series with a skin thickness of 0.070". Skins are glued to wood stiles and rails with a urethane core. The glazed sidelites are routed to receive 1/8" tempered or 1/2" insulated tempered lip lite inserts or integral flush glazed lites manufactured by Therma-Tru. The Transom glazing is a 1" insulated glass unit that is directly sealed to the jambs with butyl sealant.

### FBC Section 1707 Materials and Assembly Tests:

(1707.4.3 Exterior Door Assemblies; 1707.4.5 Mullions Door Assemblies)

Test	Description	Test Location	Date	Report No.	Certifying Engineer
ASTM E330	Uniform Static Air Pressure	NCTL - Orlando	May 30, 1997 May 11, 1998	NCTL-210-1940-1234 NCTL-210-2030-1	Barry Portnoy, #16258
ASTM E331	*Water Penetration	NCTL - Orlando	May 30, 1997 May 11, 1998	NCTL-210-1940-1234 NCTL-210-2030-1	Barry Portnoy, #16258
ASTM E283	Air Infiltration	NCTL - Orlando	May 30, 1997 May 11, 1998	NCTL-210-1940-1234 NCTL-210-2030-1	Barry Portnoy, #16258
TAS 201/203	**Large Missile Impact/Cycling	N/A	N/A	N/A	N/A

\* Sidelites are considered a window and meet 15% of Positive Design Pressure water infiltration criteria.

\*\* This product must be shuttered to meet windborne debris criteria.

### Design Pressure Ratings:

Configuration	Maximum Size	Design Pressure Ratings
Sgl. Opaque or Glazed Door Panel with Transom	<u>Q</u> X 3'0 x 7'8	+ 47.00 psf - 47.00 psf
Sgl. Opaque or Glazed Door Panel with Transom and sidelite(s)	<u>Q</u> <u>Q</u> <u>Q</u> OX, XO, OXO 5'4 x 7'8	+ 47.00 psf - 47.00 psf

**Installation and Anchoring:** See reverse side this page

### Use

1. Evaluated for use in locations adhering to the Florida Building Code and where pressure requirements as determined by ASCE 7 Minimum Design Loads for Buildings and Other Structures do not exceed the design pressure ratings listed above.
2. For Masonry installations where the sub-buck is less than 1-1/2 inches (FBC section 1707.4.4 Anchorage Methods and sub-sections 1707.4.4.1 and 1707.4.4.2) same diameter Tapcon type concrete anchors must be substituted and the length must be such that a minimum 1-1/4" engagement of the Tapcon into the masonry wall is obtained.

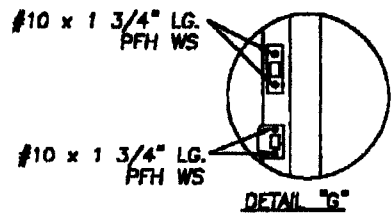
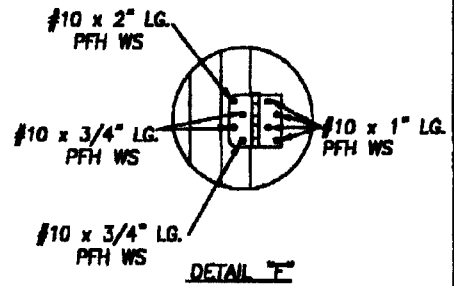
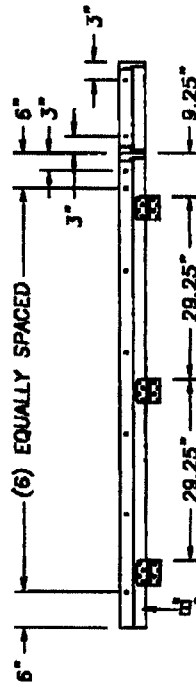
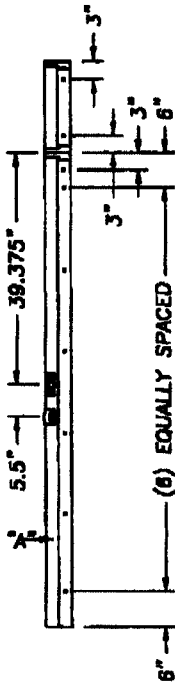
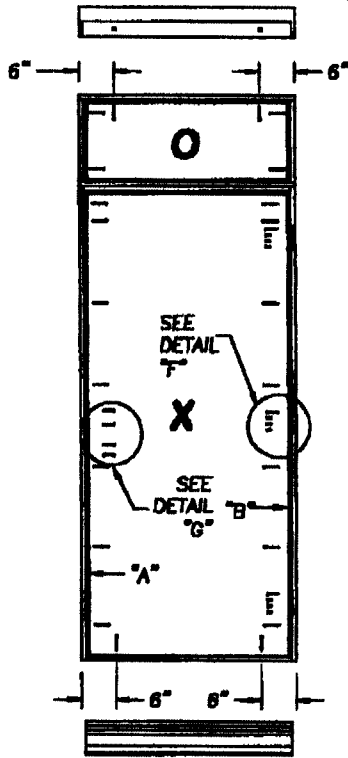
**Certification:** Lyndon F. Schmidt  
19506 French Lace Drive  
Lutz, FL 33558

Florida Professional Engineer  
License No. 43409

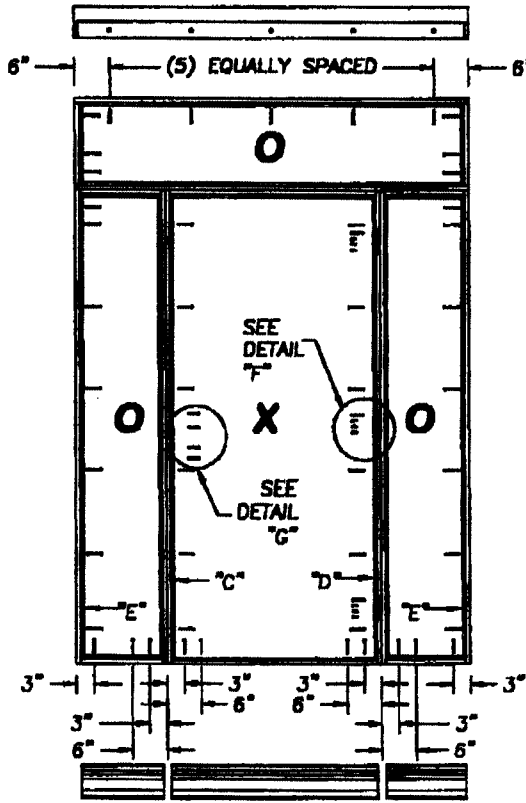


July 3, 2002

# Therma-Tru® FiberClassic / Smooth Star Fiberglass with Transom Maximum Size Up To 5'4" x 7'8"



**Note:**  
When attaching the strike & deadbolt plates without sidelites use #10 x 2" Lg. PFH WS. When attaching them with sidelites use #10 x 1 3/4" Lg. PFH WS.



**Note:** All Screws #10 x 2 1/2 Lg. PFH WS. (unless otherwise noted)

