



R W Building Consultants, Inc.

Consulting and Engineering Services for the Building Industry

P.O. Box 230 Valrico, FL 33594 Phone 813.659.9197 Facsimile 813.659.4858

ENGINEER'S NOTICE OF EVALUATION # TTF-252F

Therma-Tru Corp.
108 Mutzfeld Road
Butler, IN 46721
Phone 260.868.5811 Facsimile 260.868.5190

DESCRIPTION OF UNIT

Model Designation: Fiber Classic/Smooth Star, Series Fiberglass Door (Opaque) with or without Side-lites

Maximum Overall Nominal Size: up to 8'4 x 6'8 Usable In-swing Configurations: X, OXO, XO, OX, XX & OXXO

General Description: The head and jambs are wood measuring 4.5" x 1.25" with an extruded aluminum threshold. The door panels and sidelite panels are 1.68" thick and consist of two SMC skins with a thickness of 0.065" for the Fiber Classic Series or the Smooth Star Series with a skin thickness of 0.070". Skins are glued to wood stiles and rails with a urethane core. The glazed sidelites are routed to receive 1/8" tempered or 1/2" insulated tempered lip lite inserts or integral flush glazed lites manufactured by Therma-Tru.

FBC Section 1707 Materials and Assembly Tests:

(1707.4.3 Exterior Door Assemblies; 1707.4.5 Mullions Door Assemblies)

Test	Description	Test Location	Date	Report No.	Certifying Engineer
ASTM E330	Uniform Static Air Pressure	ETC - Rochester, NY	July 14, 2001 June 22, 2001	01-741-10702.0 01-741-11008.0	Wendell Haney, P. E. #54158 Joseph Dolden, P.E. #42929
TAS 202	Forced Entry	ETC - Rochester, NY	July 14, 2001 June 22, 2001	01-741-10702.0 01-741-11008.0	Wendell Haney, P. E. #54158 Joseph Dolden, P.E. #42929
ASTM E331	* Water Penetration	ETC - Rochester, NY	July 14, 2001 June 22, 2001	01-741-10702.0 01-741-11008.0	Wendell Haney, P. E. #54158 Joseph Dolden, P.E. #42929
ASTM E283	Air Infiltration	ETC - Rochester, NY	July 14, 2001 June 22, 2001	01-741-10702.0 01-741-11008.0	Wendell Haney, P. E. #54158 Joseph Dolden, P.E. #42929
TAS 201/203	**Large Missile Impact/Cycling	N/A	N/A	N/A	N/A

* Sidelites are considered a window and meet 15% of Positive Design Pressure water infiltration criteria.

**This product must be shuttered to meet windborne debris criteria.

Design Pressure Ratings:

Configuration	Maximum Size	Design Pressure Ratings	
Opaque Single X	Up To 3'0 x 6'8	+ 67.00 - 67.00	
Opaque Single with Sidelites XO, OX, OXO	Up To 5'4 x 6'8	+ 55.00 - 55.00	
		Alum Astragal	Coastal Alum Astragal
Opaque Double XX	Up To 6'0 x 6'8	+ 40.00 - 40.00	+ 55.00 - 55.00
Opaque Double with Sidelites OXXO	Up To 8'4 x 6'8	+ 40.00 - 40.00	+ 55.00 - 55.00

Installation and Anchoring: See reverse side this page

Use

1. Evaluated for use in locations adhering to the Florida Building Code and where pressure requirements as determined by ASCE 7 Minimum Design Loads for Buildings and Other Structures do not exceed the design pressure ratings listed above.
2. For Masonry installations where the sub-buck is less than 1-1/2 inches (FBC section 1707.4.4 Anchorage Methods and sub-sections 1707.4.4.1 and 1707.4.4.2) same diameter Tapcon type concrete anchors must be substituted and the length must be such that a minimum 1-1/4" engagement of the Tapcon into the masonry wall is obtained.

Certification: Florida Professional Engineer - Seal No. 43409

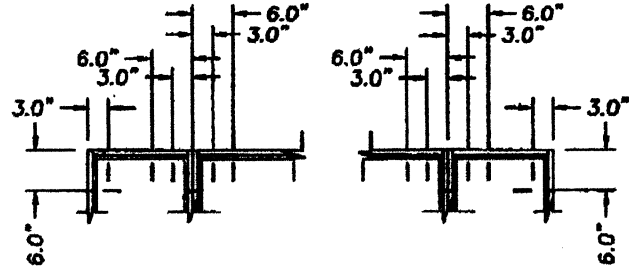
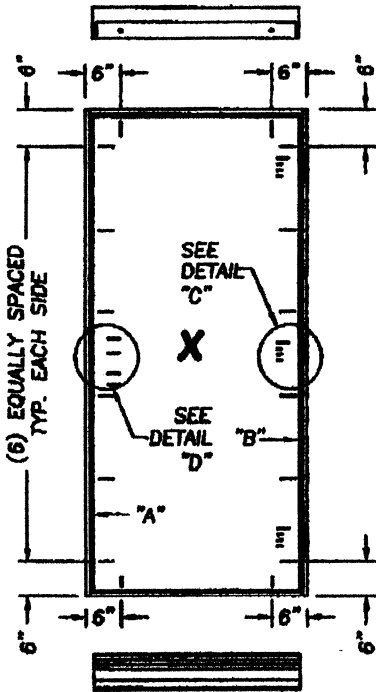
May 22, 2002

Lyndon F. Schmidt

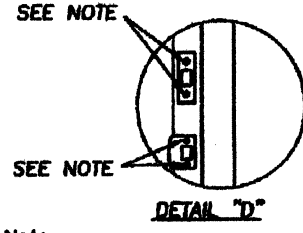
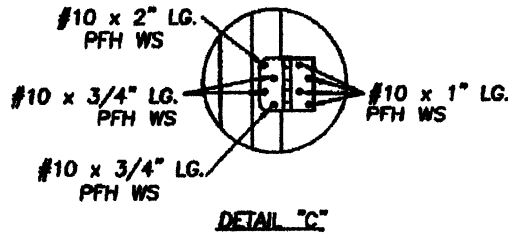
19506 French Lace Drive

Lutz, FL 33558

Therma-Tru® FiberClassic / Smooth Star In-swing Fiberglass Door Maximum Size Up To 8'4 x 6'8

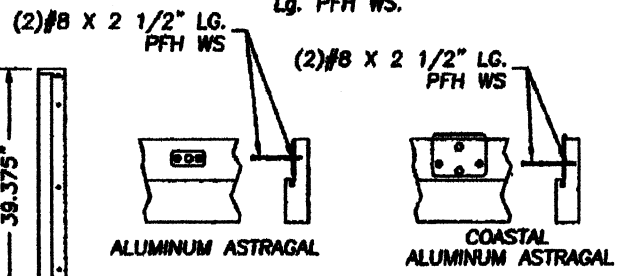
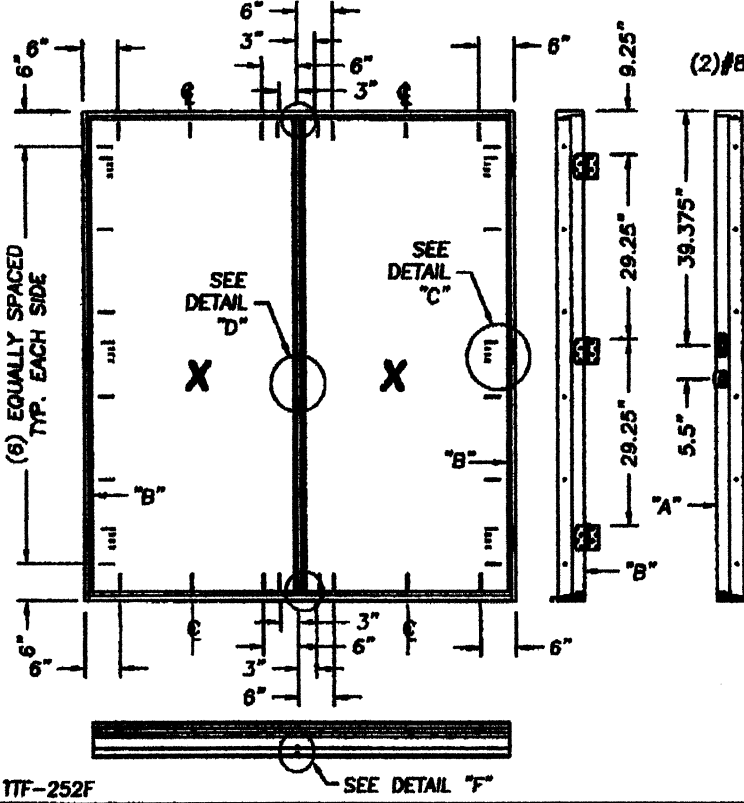
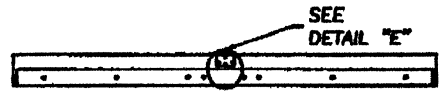


When attaching Sidelite the above anchoring applies.

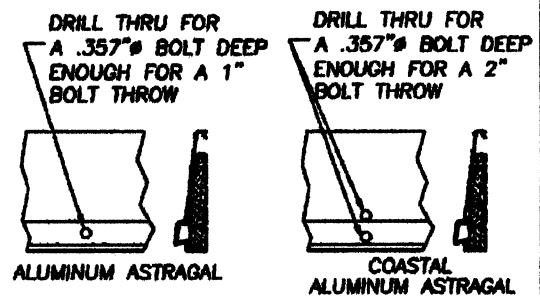


Note:
 When attaching the strike & deadbolt plates to the strike & buck use #10 x 2" Lg. PFH WS. When attaching the strike & deadbolt plates to the astragal use #8 x 2 1/2" Lg. PFH WS. When attaching the strike jamb & sidelite jamb use #10 x 1 3/4" Lg. PFH WS.

NOTE: All perimeter screws are #8 x 2-1/2" PFH WS.



ATTACH ASTRAGAL THROW BOLT STRIKE PLATE TO FRAME AS SHOWN.



ASTRAGAL THROW BOLTS AT THE THRESHOLD