

R W Building Consultants, Inc.

Consulting and Engineering Services for the Building Industry

P.O. Box 230 Valrico, FL 33594 Phone 813.659.9197

Facsimile 813.659.4858

ENGINEER'S NOTICE OF EVALUATION # TTF-271F

Therma-Tru Corp.
108 Mutzfeld Road
Butler, IN 46721
Phone 260.868.5811

DESCRIPTION OF UNIT

Model Designation: Classic-Craft, Series Fiberglass Door (Glazed) with or without Side-lites

Maximum Overall Nominal Size: up to 9'4 x 8'0 Usable In-swing Configurations: X, OXO, XO, OX, XX & OXXO

General Description: Head and side jambs are wood measuring 4.565" x 1.17" with an extruded aluminum threshold. Door panels are 1.68" thick and consist of two SMC skins 0.127" thick. The skins are glued to wood stiles and rails with a urethane core. The door panels are routed to receive a 1.0" tempered insulated glass lip lite with a maximum daylight opening of 14.869" x 55.619". The sidelite panels are 1.68" thick and consist of two SMC skins 0.070" thick. The skins are glued to wood stiles and rails with a urethane core. The sidelite sashes are molded to receive a 0.5" or 1.0" tempered insulated glass lip lite with a maximum daylight opening of 7.125" x 79.0". All panels have a 0.5" glass bite.

FBC Section 1707 Materials and Assembly Tests:

(1707.4.3 Exterior Door Assemblies; 1707.4.5 Mullions Door Assemblies)

Test	Description	Test Location	Date	Report No.	Certifying Engineer
ASTM E330	Uniform Static Air Pressure	ETC -- Rochester, NY	May 19, 2001	ETC 01-741-11198.0	Wendell Haney, P.E. # 54158
		ETC -- Rochester, NY	October 20, 2001	ETC 01-741-11212.0	Mark Passero, P.E. #53786
TAS 202	Forced Entry	ETC -- Rochester, NY	May 19, 2001	ETC 01-741-11198.0	Wendell Haney, P.E. # 54158
		ETC -- Rochester, NY	October 20, 2001	ETC 01-741-11212.0	Mark Passero, P.E. #53786
ASTM E331	* Water Penetration	ETC -- Rochester, NY	May 19, 2001	ETC 01-741-11198.0	Wendell Haney, P.E. # 54158
		ETC -- Rochester, NY	October 20, 2001	ETC 01-741-11212.0	Mark Passero, P.E. #53786
ASTM E283	Air Infiltration	ETC -- Rochester, NY	May 19, 2001	ETC 01-741-11198.0	Wendell Haney, P.E. # 54158
		ETC -- Rochester, NY	October 20, 2001	ETC 01-741-11212.0	Mark Passero, P.E. #53786
TAS 201/203	**Large Missile Impact/Cycling	N/A	N/A	N/A	N/A

* Sidelites are considered a window and meet 15% of Positive Design Pressure water infiltration criteria.

**This product must be shuttered to meet windborne debris criteria.

Design Pressure Ratings:

Configuration		Maximum Size	Design Pressure Ratings	
Glazed Single	X	Up To 3'6 x 8'0	+ 57.00 - 57.00	
Glazed Single with Sidelites	OXO, OX, OXO	Up To 5'10 x 8'0	+ 40.00 - 40.00	
			Alum Astragal	Coastal Alum Astragal
Glazed Double	XX	Up To 7'0 x 8'0	+ 34.00 - 34.00	+ 40.00 - 40.00
Glazed Double with Sidelites	OXXO	Up To 9'4 x 8'0	+ 34.00 - 34.00	+ 40.00 - 40.00

Installation and Anchoring: See reverse side this page

Use

1. Evaluated for use in locations adhering to the Florida Building Code and where pressure requirements as determined by **ASCE 7 Minimum Design Loads for Buildings and Other Structures** do not exceed the design pressure ratings listed above.
2. For Masonry installations where the sub-buck is less than 1-1/2 inches (FBC section 1707.4.4 Anchorage Methods and subsections 1707.4.4.1 and 1707.4.4.2) same diameter Tapcon type concrete anchors must be substituted and the length must be such that a minimum 1-1/4" engagement of the Tapcon into the masonry wall is obtained.

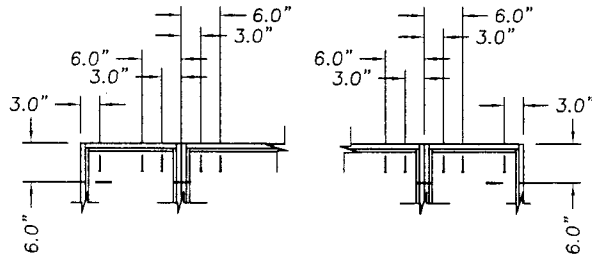
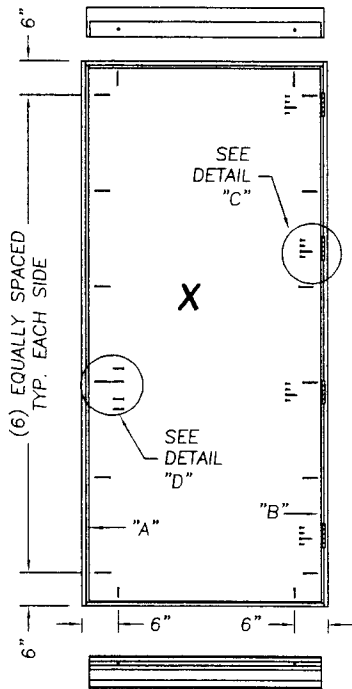
Certification: Florida Professional Engineer - Seal No. 43409

March 3, 2003

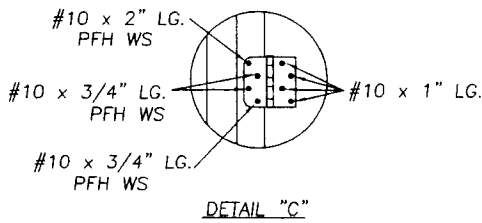
Lyndon F. Schmidt
19506 French Lace Drive
Lutz, FL 33558

Therma-Tru® Classic - Craft In-swing Fiberglass Door

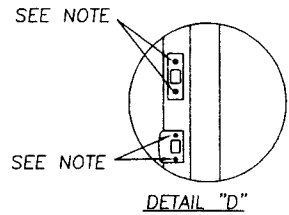
Maximum Size Up To 9'4" x 8'0"



When attaching Sidelite the above anchoring applies.



DETAIL "C"

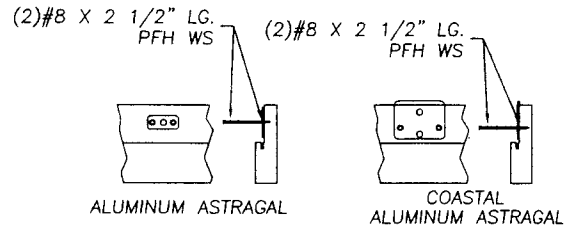
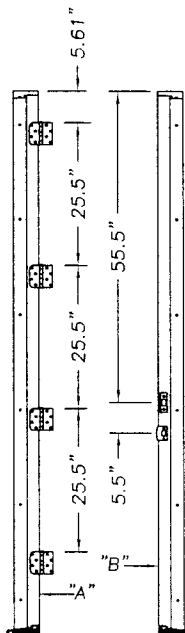
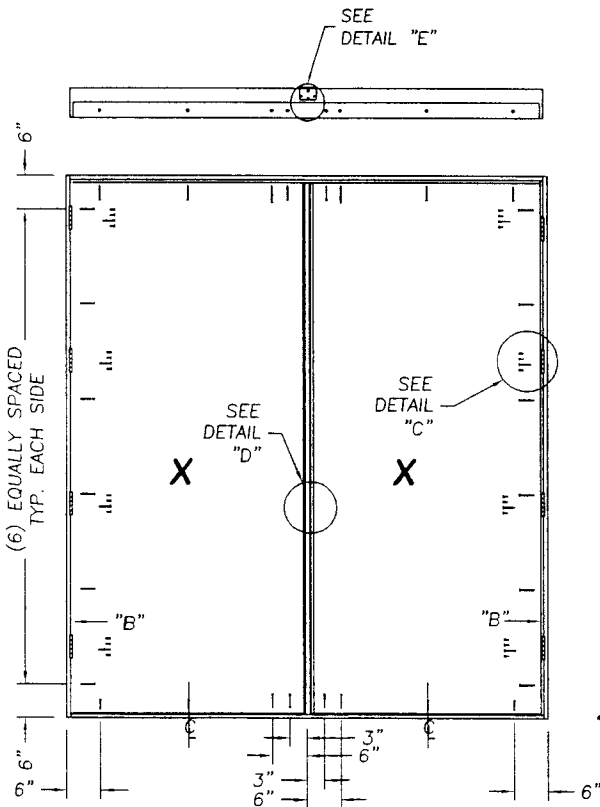


DETAIL "D"

NOTE: All perimeter screws are #8 x 2 1/2" Lg. PFH WS.

Note:

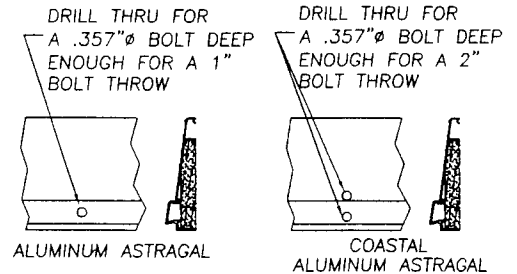
When attaching the strike & deadbolt plates to the strike & buck use #10 x 2" Lg. PFH WS. When attaching the strike & deadbolt plates to the astragal use #8 x 2 1/2" Lg. PFH WS. When attaching the strike jamb & sidelite jamb use #10 x 1 3/4" Lg. PFH WS.



ALUMINUM ASTRAGAL

COASTAL ALUMINUM ASTRAGAL

DETAIL "E"
ATTACH ASTRAGAL THROW BOLT STRIKE PLATE TO FRAME AS SHOWN.



ALUMINUM ASTRAGAL

COASTAL ALUMINUM ASTRAGAL

DETAIL "F"
ASTRAGAL THROW BOLTS AT THE THRESHOLD