

R W Building Consultants, Inc.

Consulting and Engineering Services for the Building Industry

P.O. Box 230 Valrico, FL 33594 Phone 813.659.9197

Facsimile 813.659.4858

ENGINEER'S NOTICE OF EVALUATION # TTF-273F

Therma-Tru Corp.
108 Mutzfeld Road
Butler, IN 46721
Phone 260.868.5811

DESCRIPTION OF UNIT

Model Designation: Classic-Craft, Series Fiberglass Door (Opaque) with or without Side-lites

Maximum Overall Nominal Size: up to 9'4 x 6'8 **Usable In-swing Configurations:** X, OXO, XO, OX, XX & OXXO

General Description: Head and side jambs are wood measuring 4.565" x 1.17" with an extruded aluminum threshold. The door panels are 1.68" thick and consist of two SMC skins 0.098" thick. The skins are glued to wood stiles and rails with a urethane core. The sidelite panels are 1.68" thick and consist of two SMC skins 0.070" thick glued to wood stiles and rails with a urethane core. The sidelite sashes are molded to receive a 0.50" or 1.0" tempered insulated glass lip lite with a maximum daylight opening of 7.125" x 63.0". The sidelite panels have a 0.5" glass bite.

FBC Section 1707 Materials and Assembly Tests:

(1707.4.3 Exterior Door Assemblies; 1707.4.5 Mullions Door Assemblies)

Test	Description	Test Location	Date	Report No.	Certifying Engineer
ASTM E330	Uniform Static Air Pressure	ETC - Rochester, NY	April 14, 2001	ETC 01-741-10704.0	Wendell Haney, P.E. # 54158
		ETC - Rochester, NY	June 22, 2001	ETC 01-741-11008.0	Joseph Dolden, P.E. # 42929
TAS 202	Forced Entry	ETC - Rochester, NY	April 14, 2001	ETC 01-741-10704.0	Wendell Haney, P.E. # 54158
		ETC - Rochester, NY	June 22, 2001	ETC 01-741-11008.0	Joseph Dolden, P.E. # 42929
ASTM E331	* Water Penetration	ETC - Rochester, NY	April 14, 2001	ETC 01-741-10704.0	Wendell Haney, P.E. # 54158
		ETC - Rochester, NY	June 22, 2001	ETC 01-741-11008.0	Joseph Dolden, P.E. # 42929
ASTM E283	Air Infiltration	ETC - Rochester, NY	April 14, 2001	ETC 01-741-10704.0	Wendell Haney, P.E. # 54158
		ETC - Rochester, NY	June 22, 2001	ETC 01-741-11008.0	Joseph Dolden, P.E. # 42929
TAS 201/203	**Large Missile Impact/Cycling	N/A	N/A	N/A	N/A

* Sidelites are considered a window and meet 15% of Positive Design Pressure water infiltration criteria.

**This product must be shuttered to meet windborne debris criteria.

Design Pressure Ratings:

Configuration	Maximum Size	Design Pressure Ratings	
Glazed Single X	Up To 3'6 x 6'8	+ 77.00 - 77.00	
Glazed Single with Sidelites XO, OX, OXO	Up To 5'10 x 6'8	+ 47.00 - 47.00	
		Alum Astragal	Coastal Alum Astragal
Glazed Double XX	Up To 7'0 x 6'8	+ 40.00 - 40.00	+ 47.00 - 47.00
Glazed Double with Sidelites OXXO	Up To 9'4 x 6'8	+ 40.00 - 40.00	+ 47.00 - 47.00

Installation and Anchoring: See reverse side this page

Use

1. Evaluated for use in locations adhering to the Florida Building Code and where pressure requirements as determined by **ASCE 7 Minimum Design Loads for Buildings and Other Structures** do not exceed the design pressure ratings listed above.
2. For Masonry installations where the sub-buck is less than 1-1/2 inches (FBC section 1707.4.4 Anchorage Methods and sub-sections 1707.4.4.1 and 1707.4.4.2) same diameter Tapcon type concrete anchors must be substituted and the length must be such that a minimum 1-1/4" engagement of the Tapcon into the masonry wall is obtained.

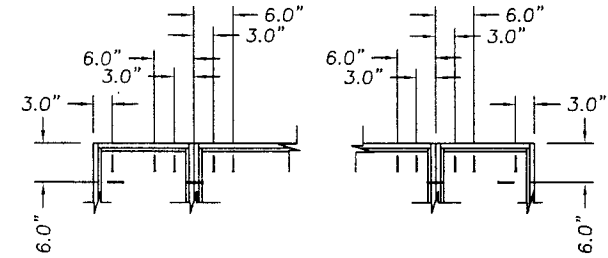
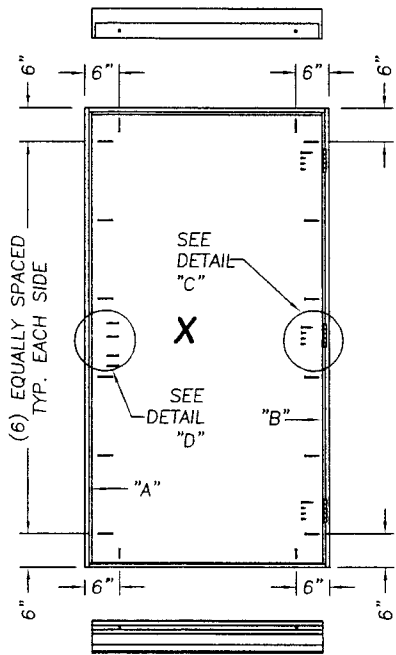
Certification: Florida Professional Engineer - Seal No. 43409

March 3, 2003

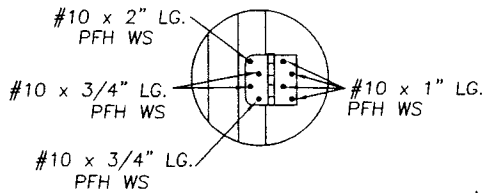
Lyndon F. Schmidt
19506 French Lace Drive
Lutz, FL 33558

Therma-Tru® Classic - Craft In-swing Fiberglass Door

Maximum Size Up To 9'4 x 6'8

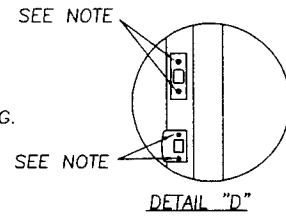


When attaching Sidelite the above anchoring applies.



DETAIL "C"

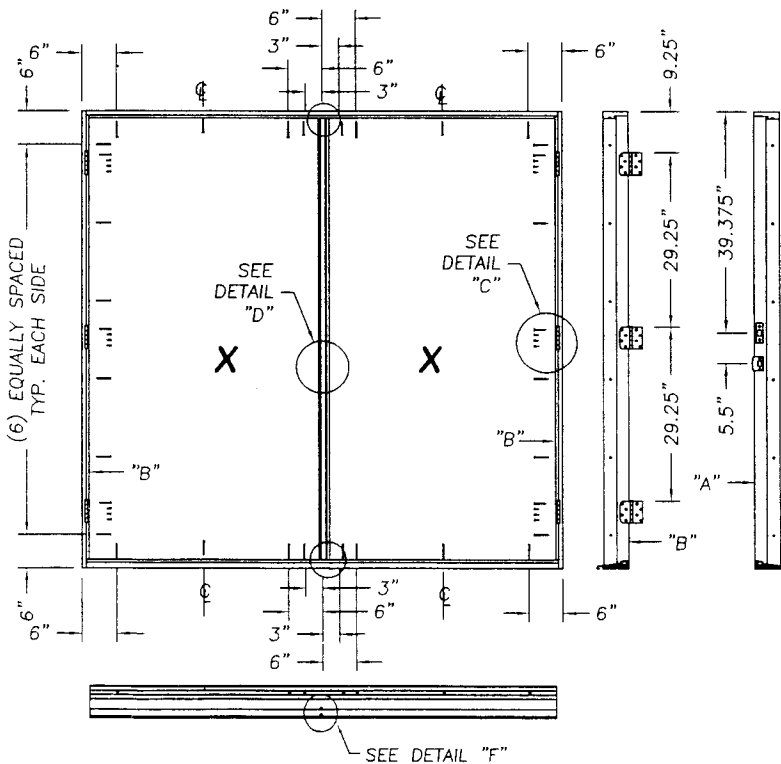
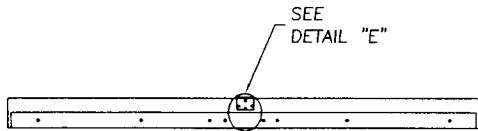
NOTE: All perimeter screws are #8 x 2-1/2" PFH WS.



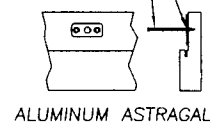
DETAIL "D"

Note:

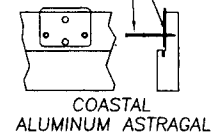
When attaching the strike & deadbolt plates to the strike & buck use #10 x 2" Lg. PFH WS. When attaching the strike & deadbolt plates to the astragal use #8 x 2 1/2" Lg. PFH WS. When attaching the strike jamb & sidelite jamb use #10 x 1 3/4" Lg. PFH WS.



(2) #8 x 2 1/2" LG. PFH WS



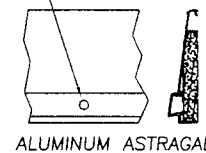
(2) #8 x 2 1/2" LG. PFH WS



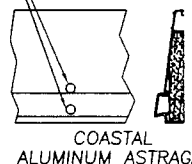
DETAIL "E"

ATTACH ASTRAGAL THROW BOLT STRIKE PLATE TO FRAME AS SHOWN.

DRILL THRU FOR A .357" Ø BOLT DEEP ENOUGH FOR A 1" BOLT THROW



DRILL THRU FOR A .357" Ø BOLT DEEP ENOUGH FOR A 2" BOLT THROW



DETAIL "F"

ASTRAGAL THROW BOLTS AT THE THRESHOLD