

# R W Building Consultants, Inc.

Consulting and Engineering Services for the Building Industry

P.O. Box 230 Valrico, FL 33594 Phone 813.659.9197

Facsimile 813.659.4858

## ENGINEER'S NOTICE OF EVALUATION # TTF-276F

Therma-Tru Corp.  
108 Mutzfeld Road  
Butler, IN 46721  
Phone 260.868.5811

### DESCRIPTION OF UNIT

**Model Designation:** Classic-Craft, Series Fiberglass Door (Opaque) with or without Side-lites

**Maximum Overall Nominal Size: up to 9'4 x 8'0 Usable Out-swing Configurations: X, OXO, XO, OX, XX & OXXO**

**General Description:** Head and side jambs are wood measuring 4.565" x 1.17" with an extruded aluminum threshold. The door panels are 1.68" thick and consist of two SMC skins 0.127" thick. The skins are glued to wood stiles and rails with a urethane core. The sidelite panels are 1.68" thick and consist of two SMC skins 0.070" thick glued to wood stiles and rails with a urethane core. The sidelite sashes are molded to receive a 0.50" or 1.0" tempered insulated glass lip lite with a maximum daylight opening of 7.125" x 79.0". The sidelite panels have a 0.5" glass bite.

### FBC Section 1707 Materials and Assembly Tests:

(1707.4.3 Exterior Door Assemblies; 1707.4.5 Mullions Door Assemblies)

| Test        | Description                    | Test Location       | Date             | Report No.         | Certifying Engineer         |
|-------------|--------------------------------|---------------------|------------------|--------------------|-----------------------------|
| ASTM E330   | Uniform Static Air Pressure    | ETC – Rochester, NY | May 17, 2001     | ETC 01-741-10705.0 | Wendell Haney, P.E. # 54158 |
|             |                                | ETC – Rochester, NY | October 19, 2001 | ETC 01-741-10593.0 | Mark Passero, P.E. # 53786  |
| TAS 202     | Forced Entry                   | ETC – Rochester, NY | May 17, 2001     | ETC 01-741-10705.0 | Wendell Haney, P.E. # 54158 |
|             |                                | ETC – Rochester, NY | October 19, 2001 | ETC 01-741-10593.0 | Mark Passero, P.E. # 53786  |
| ASTM E331   | * Water Penetration            | ETC – Rochester, NY | May 17, 2001     | ETC 01-741-10705.0 | Wendell Haney, P.E. # 54158 |
|             |                                | ETC – Rochester, NY | October 19, 2001 | ETC 01-741-10593.0 | Mark Passero, P.E. # 53786  |
| ASTM E283   | Air Infiltration               | ETC – Rochester, NY | May 17, 2001     | ETC 01-741-10705.0 | Wendell Haney, P.E. # 54158 |
|             |                                | ETC – Rochester, NY | October 19, 2001 | ETC 01-741-10593.0 | Mark Passero, P.E. # 53786  |
| TAS 201/203 | **Large Missile Impact/Cycling | N/A                 | N/A              | N/A                | N/A                         |

\* Sidelites are considered a window and meet 15% of Positive Design Pressure water infiltration criteria.

\*\*This product must be shuttered to meet windborne debris criteria.

### Design Pressure Ratings:

| Configuration                            | Maximum Size     | Design Pressure Ratings |                       |
|--|------------------|-------------------------|-----------------------|
| Glazed Single X                          | Up To 3'6 x 8'0  | + 64.00 – 64.00         |                       |
| Glazed Single with Sidelites XO, OX, OXO | Up To 5'10 x 8'0 | + 40.00 – 40.00         |                       |
|  |                  | Alum Astragal           | Coastal Alum Astragal |
| Glazed Double XX                         | Up To 7'0 x 8'0  | + 34.00 - 34.00         | + 40.00 – 40.00       |
| Glazed Double with Sidelites OXXO        | Up To 9'4 x 8'0  | + 34.00 - 34.00         | + 40.00 – 40.00       |

**Installation and Anchoring:** See reverse side this page

### Use

1. Evaluated for use in locations adhering to the Florida Building Code and where pressure requirements as determined by **ASCE 7 Minimum Design Loads for Buildings and Other Structures** do not exceed the design pressure ratings listed above.
2. For Masonry installations where the sub-buck is less than 1-1/2 inches (FBC section 1707.4.4 Anchorage Methods and sub-sections 1707.4.4.1 and 1707.4.4.2) same diameter Tapcon type concrete anchors must be substituted and the length must be such that a minimum 1-1/4" engagement of the Tapcon into the masonry wall is obtained.

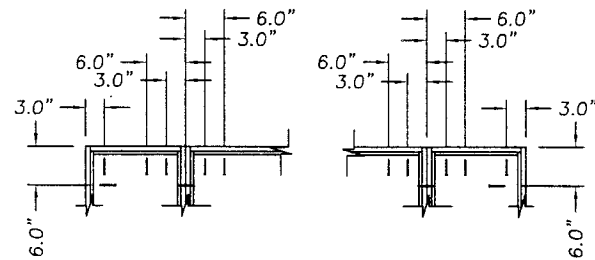
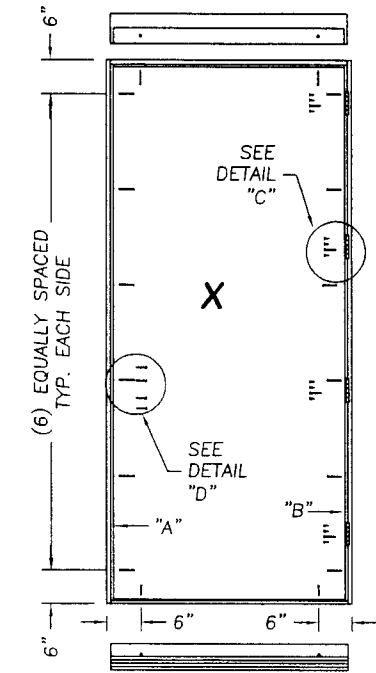
**Certification:** Florida Professional Engineer - Seal No. 43409

March 3, 2003

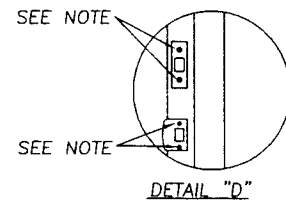
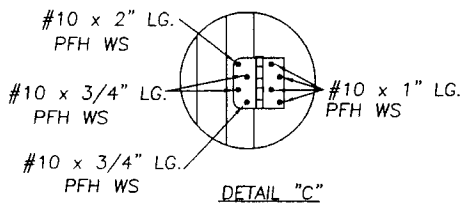
Lyndon F. Schmidt  
19506 French Lace Drive  
Lutz, FL 33558

# Therma-Tru® Classic - Craft Out-swing Fiberglass Door

## Maximum Size Up To 9'4 x 8'0



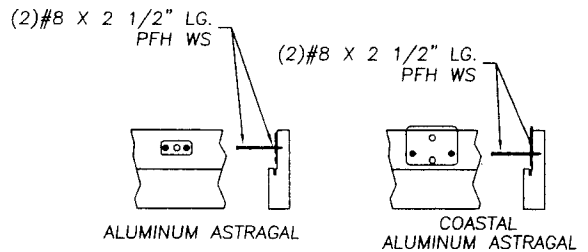
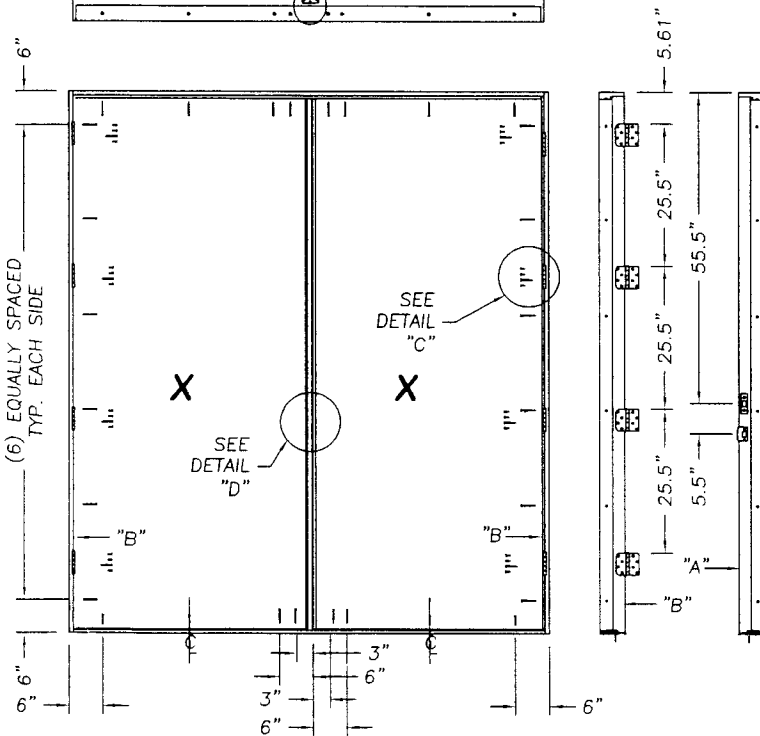
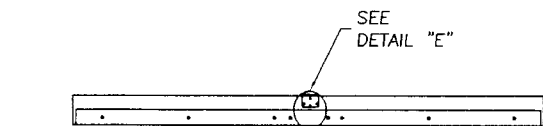
When attaching Sidelite the above anchoring applies.



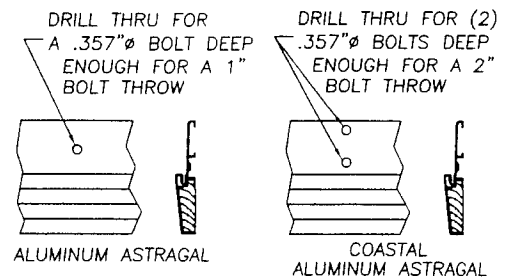
Note:

When attaching the strike & deadbolt plates to the strike & buck use #10 x 2" Lg. PFH WS. When attaching the strike & deadbolt plates to the astragal use #8 x 2 1/2" Lg. PFH WS. When attaching the strike jamb & sidelite jamb use #10 x 1 3/4" Lg. PFH WS.

NOTE: All perimeter screws are #8 x 2-1/2" PFH WS.



DETAIL "E"  
ATTACH ASTRAGAL THROW BOLT STRIKE PLATE TO FRAME AS SHOWN.



DETAIL "F"  
ASTRAGAL THROW BOLTS AT THE THRESHOLD